

PLACE OF HOPE AT THE RINKER CAMPUS

BEING A REPLAT OF A PORTION OF TRACTS 58, 59 AND 60, BLOCK 79 OF "PALM BEACH FARMS CO. PLAT NO.3", AS RECORDED IN PLAT BOOK 2, PAGES 45 THROUGH 54, OF THE PUBLIC RECORDS OF PALM BEACH COUNTY, BEING A PARCEL OF LYING IN SECTION 20, TOWNSHIP 47 SOUTH, RANGE 42 EAST, PALM BEACH COUNTY, FLORIDA AND FLORIDA

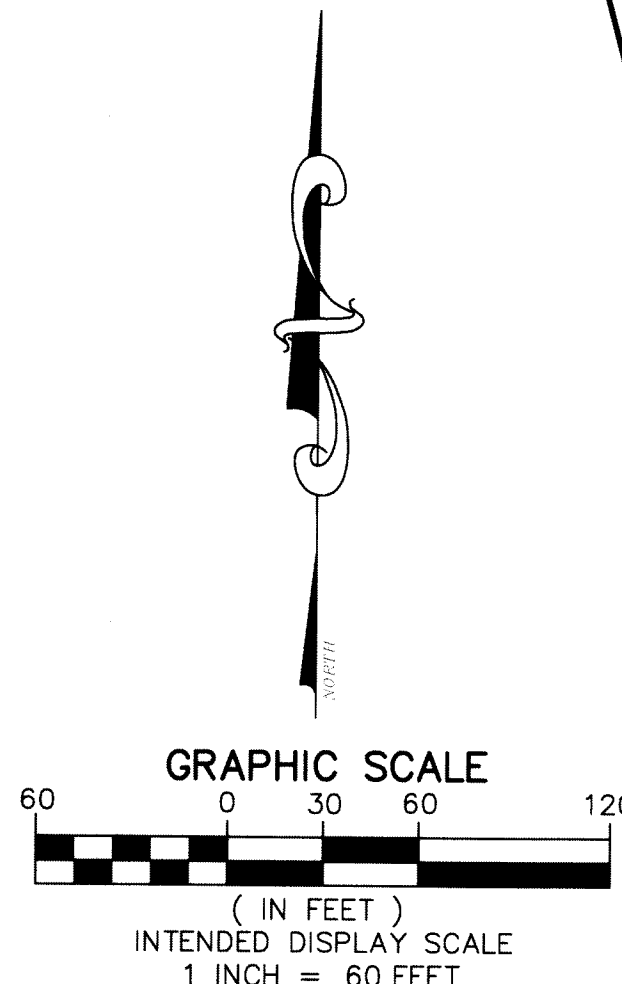
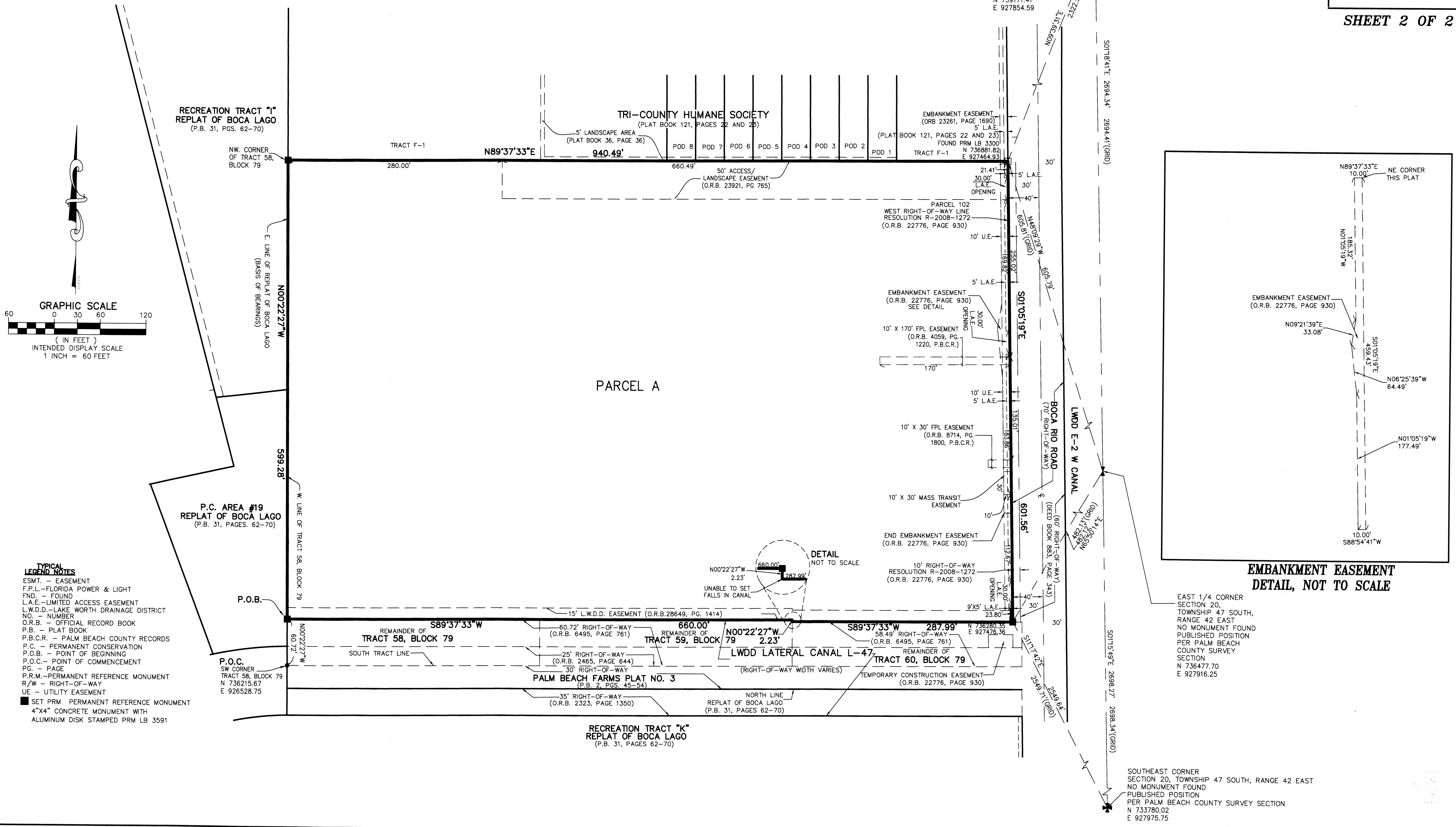
THIS INSTRUMENT PREPARED BY
DAVID P. LINDLEY
OF
CAULFIELD and WHEELER, INC.
SURVEYORS - ENGINEERS - PLANNERS
7900 GLADES ROAD, SUITE 100
BOCA RATON, FLORIDA 33434 - (561)392-1991
CERTIFICATE OF AUTHORIZATION NO. LB3591

NOTES
COORDINATES, BEARINGS AND DISTANCES
COORDINATES SHOWN ARE GRID
DATUM = NAD 83 1990 ADJUSTMENT
ZONE = FLORIDA EAST
LINEAR UNIT = US SURVEY FEET
COORDINATE SYSTEM 1983 STATE PLANE
TRANSVERSE MERCATOR PROJECTION
ALL DISTANCES ARE GROUND, UNLESS OTHERWISE NOTED
SCALE FACTOR = 1.0000259
GROUND DISTANCE X SCALE FACTOR = GRID DISTANCE
BEARINGS AS SHOWN HEREON ARE GRID DATUM,
NAD 83 1990 ADJUSTMENT, FLORIDA EAST ZONE.

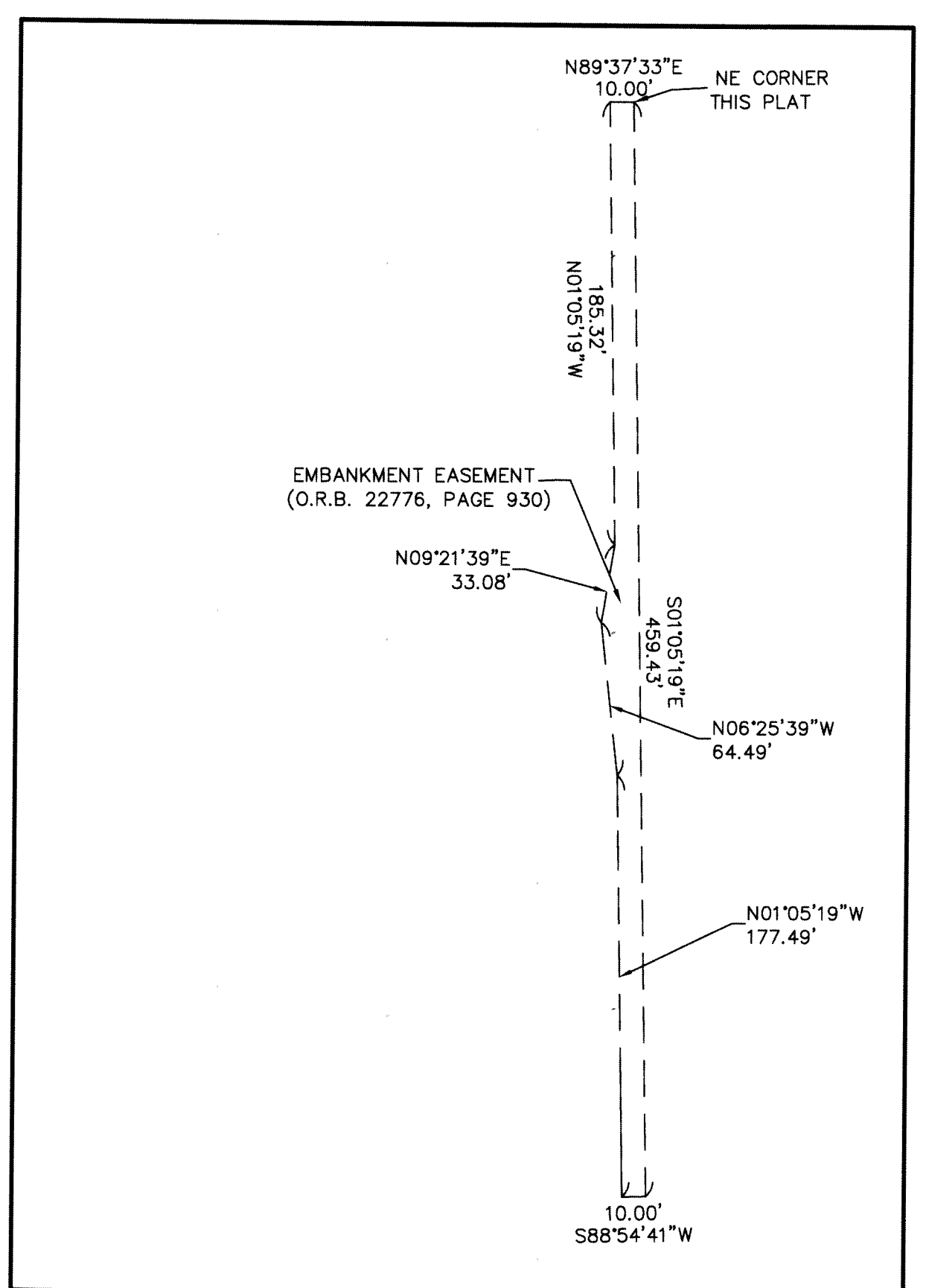
137

STATE OF FLORIDA
COUNTY OF PALM BEACH
THIS PLAT WAS FILED FOR
RECORD AT _____ M.
THIS _____ DAY OF _____
A.D. 2017 AND DULY RECORDED
IN PLAT BOOK _____ ON
PAGES _____ AND _____
SHARON R. BOCK
CLERK AND COMPTROLLER
BY: _____
DEPUTY CLERK

SHEET 2 OF 2



TYPICAL LEGEND NOTES
ESMT. - EASEMENT
F.P.L. - FLORIDA POWER & LIGHT
FND. - FOUND
L.A.E. - LIMITED ACCESS EASEMENT
L.W.D.D. - LAKE WORTH DRAINAGE DISTRICT
NO. - NUMBER
O.R.B. - OFFICIAL RECORD BOOK
P.B. - PLAT BOOK
P.B.C.R. - PALM BEACH COUNTY RECORDS
P.C. - PERMANENT CONSERVATION
P.O.B. - POINT OF BEGINNING
P.O.C. - POINT OF COMMENCEMENT
PG. - PAGE
P.R.M. - PERMANENT REFERENCE MONUMENT
R/W - RIGHT-OF-WAY
UE - UTILITY EASEMENT
■ SET PRM PERMANENT REFERENCE MONUMENT
4"x4" CONCRETE MONUMENT WITH ALUMINUM DISK STAMPED PRM LB 3591



EMBankment EASEMENT DETAIL, NOT TO SCALE

SOUTHEAST CORNER SECTION 20, TOWNSHIP 47 SOUTH, RANGE 42 EAST
NO MONUMENT FOUND
PUBLISHED POSITION PER PALM BEACH COUNTY SURVEY SECTION N 733780.02 E 927975.75